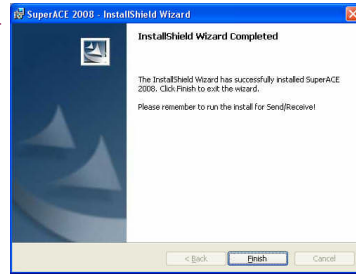


6) Installation Complete:

Click the Finish button when the installation has been completed. A SuperACE/FLIPS icon will have been placed on the desktop.

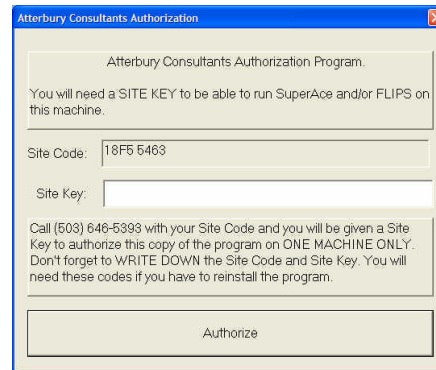


7) For users updating from earlier versions of SuperACE/FLIPS:

Restore any data backups and your table backup.

8) Software Authorization:

The authorization screen will come up when you first boot SuperACE/FLIPS. Call Atterbury Consultants, Inc. for a Site Key to authorize your copy of SuperACE/FLIPS. Site Keys will only be given out for legally purchased copies of SuperACE/FLIPS. Each purchased copy will need a unique Site Key.



9) Optional Installation of SendReceive program for use with Pocket Super EASY: If you will be using a Pocket PC to run Pocket Super EASY, you need to install the SendReceive program from the installation CD. You may double click on the file SendReceive-Setup.msi on the CD (In SendReceive Folder) and it will install. If the file is not loaded, SuperACE will not be able to communicate with a Pocket PC. **(Load SuperACE BEFORE loading SendReceive)**

Minimum Requirements for running SuperACE:

Pentium II, 128 megabytes of RAM, 10 Gigabyte Hard drive.

Recommended Requirements for running SuperACE:

Pentium IV, 3 Gigahertz processor or faster, 1 to 2 Gigabytes of RAM, 300+ gigabyte hard drive, 256 Megabyte or faster video card.

Supported operating systems:

Windows NT, 2000, and XP Pro (Not XP Pro 64 bit).

Atterbury Consultants, Inc.

© 1999-2008 Atterbury Consultants, Inc.

SuperACE/FLIPS

for

(Windows NT, 2000, & XP Pro)

Installation Guide

Quick Instructions for people in a hurry:

1. Backup previously collected SuperACE data 2. Backup your tables from SuperACE 3. un-install all previous versions of SuperACE/FLIPS prior to loading new version of SuperACE/FLIPS 4. Install SuperACE/FLIPS 5. Call for a site key. 6. Restore your tables and data into SuperACE/FLIPS. 7. Install the SendReceive program from the CD if you are using Pocket Super EASY.

3800 SW Cedar Hills Blvd., #145

Beaverton, Oregon 97005

Phone: (503) 646-5393

Fax: (503) 644-1683

<http://www.atterbury.com>

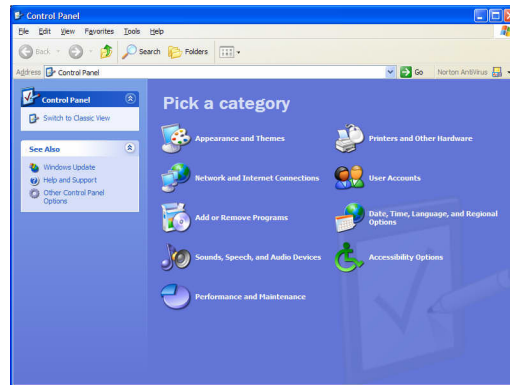
e-mail: tburke@atterbury.com

1) Installation of SuperACE/FLIPS.

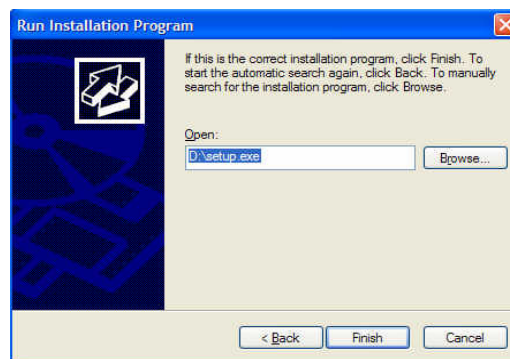
New Yield Tables are available in SuperACE/FLIPS. To avoid overwriting these tables users should back up their old tables from previous SuperACE versions. After SuperACE/FLIPS is installed, users can restore their old tables.

***You must un-install all previous versions of SuperACE, or FLIPS before loading the new software. Don't forget to back up all existing data before you do this. While uninstalling SuperACE, if your computer asks if you want to delete unnecessary DLL files, click on the "NO to ALL" button.**

To install the new software, go to "My Computer", "Control Panel", then to "Add/Remove programs"/ "Add New Programs". Press the "CD or Floppy" button to start.

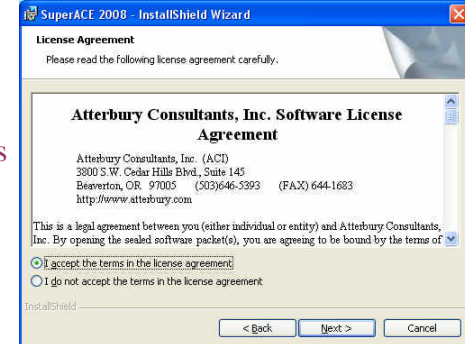


2) Select the drive where you placed the SuperACE/FLIPS CD. It will probably be your D:, E:, or F: drive. Select Setup.exe in the SUPERACE-FLIPS Folder and click on the Finish Button.

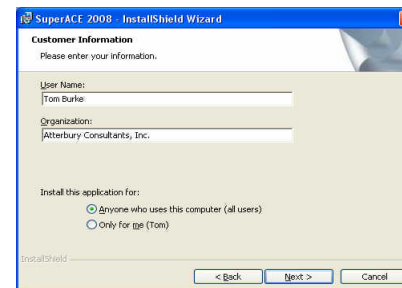


3) License Screen:

Read the license Agreement and Accept or Reject before continuing on. If you reject the terms and conditions of the License Agreement, the installation process will abort. This step can not be bypassed.



4) Customer Information: Enter User Name and Organization and click Next.



5) Select Folder :

The default folder is C:\FLIPS08. It is highly recommended that you load SuperACE/FLIPS into the default drive and folder.

