

Pocket SuperEASY™

Installation Guide



**For Operating Systems:
Windows Mobile 2003, 2003SE (Second Edition)
Windows Mobile 5.0
Windows Mobile 6.0
.NET CE V4.2**

Atterbury Consultants, Inc.

3800 SW Cedar Hills Blvd. Suite 145
Beaverton, Oregon 97005
503-646-5393 Phone
503-644-1683 Fax
www.atterbury.com

Pocket SuperEASY™ System Requirements

Operating Systems:

Windows Mobile 2003, 2003SE (Second Edition), Windows Mobile 5.0, Windows Mobile 6.0, or .NET CE V4.2

Minimum Hardware Requirements:

64 Mb of memory
200 MHz processor

Recommended Hardware Requirements:

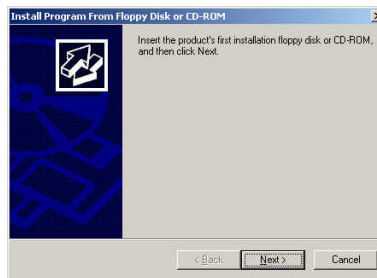
64 Mb of memory
400 MHz processor or faster
512 MB, or larger, storage card

Software Installation

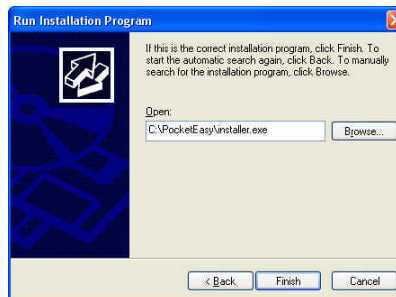
Be sure you have access to SuperACE™ before using Pocket SuperEASY™ to collect cruise data. Pocket SuperEASY™ will only download cruise data to a PC or laptop computer that has a copy of SuperACE™ installed. Pocket SuperEASY™ is not compatible with previous versions of SuperACE™.

To install Pocket SuperEASY™:

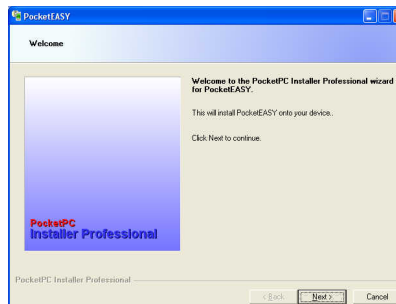
1. Make sure your mobile device is “synced” to your PC.
2. Load the installation CD on the PC.
3. Open Control Panel on the PC.
4. Select “Add/Remove Programs”
5. Select “Add New Programs”
6. Click on “CD or Floppy”
7. The following screen appears



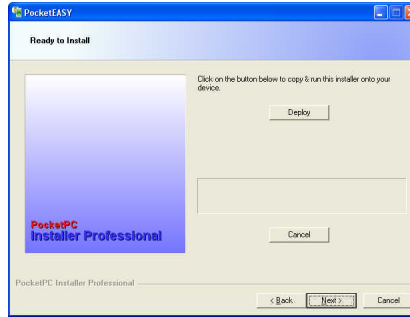
8. Click Next



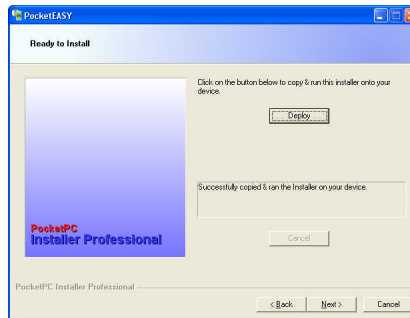
9. Browse to the CD and select **Installer.exe** located in the **PocketEASY folder** and click Finish.



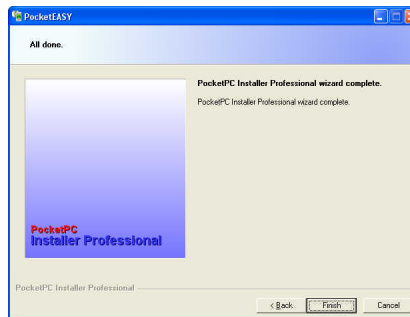
10. Click Next.



11. Click Deploy. The installation will begin. Wait until you see the message **“Successfully copied & ran the installer on your device”** on the screen.



12. Click Next.



13. The install is complete. Click Finish.

14. The program is now loaded onto your mobile device.